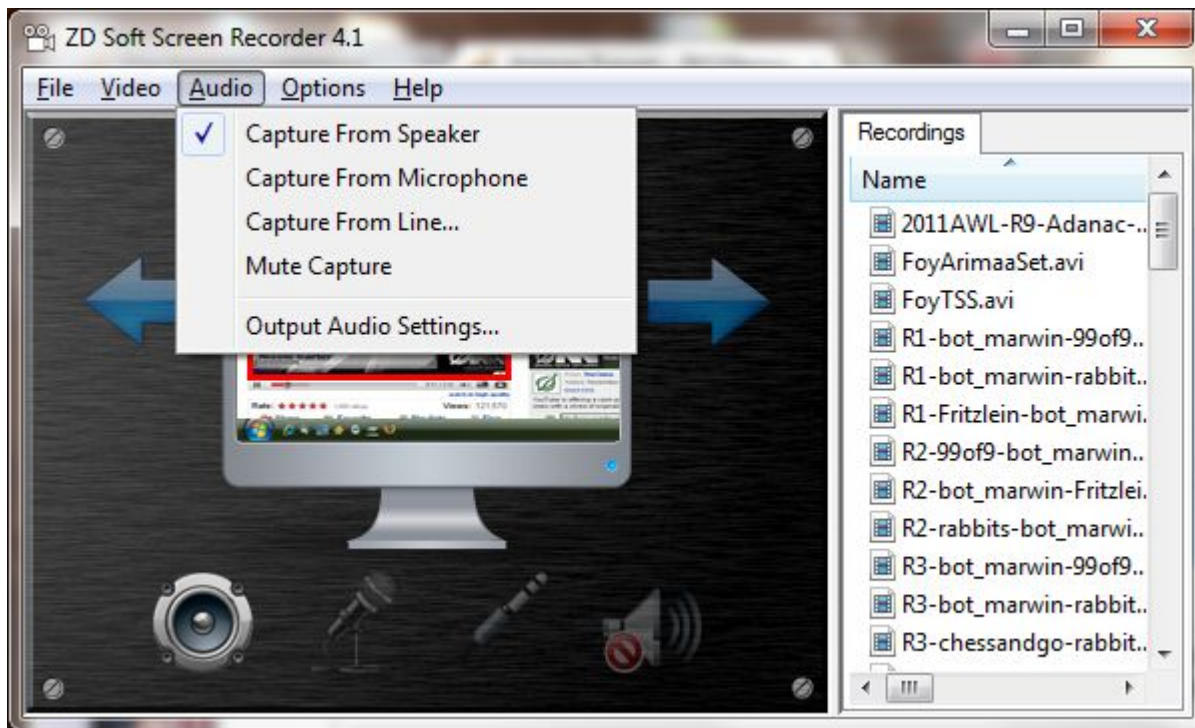


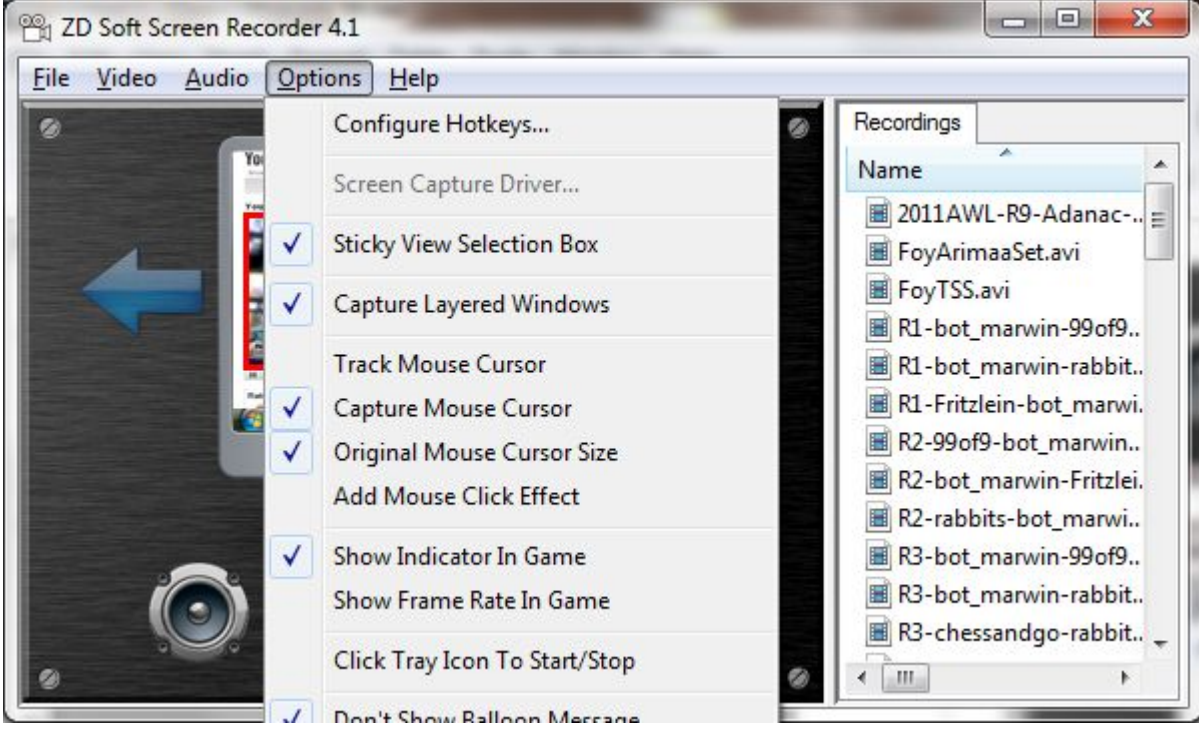
To record Arimaa videos:

Use 'ZD Soft Screen Recorder' version 4.1 or higher

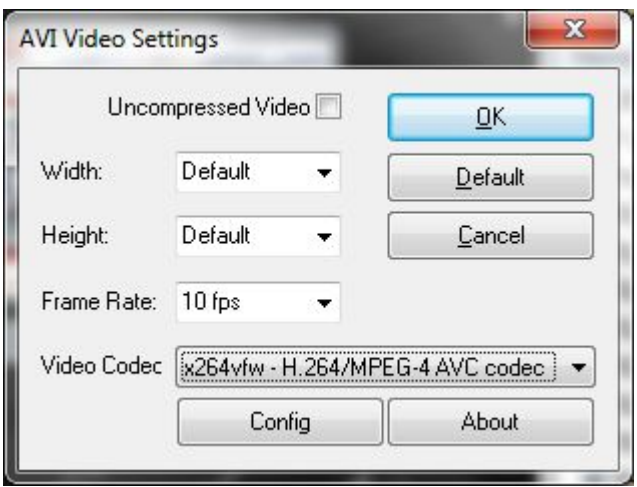
After opening the program:

- click arrows to select 'Capture Selected View' mode
- click on image to open the capture window
- set window size to about 593x411
- click on icon in the tray to close capture window

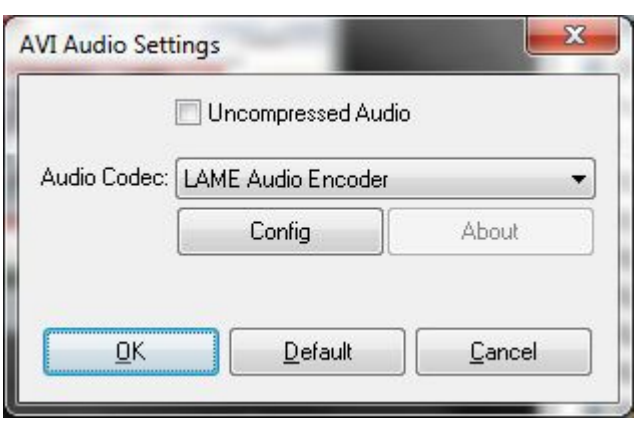




Video – Output Video Settings



Output Audio Settings





Output Video Settings Config

x264vfw configuration

Main Analysis & Encoding Rate control & Other

Main

Build date: Feb 28 2010 17:17:44
libx264 core 89 r1471kMod 1144615

Single pass - ratefactor-based (CRF)

Ratefactor

1.0 (High quality) (Low quality) 51.0

Create stats file

Stats file ...

Extra options:

Misc

AVC level

Sample Aspect Ratio:

SAR width

SAR height

Debug

Log level

PSNR

SSIM

Disable all CPU optimizations

VFW

FourCC

VirtualDub Hack

Disable decoder

Use command line:

Load Defaults OK Cancel

x264vfw configuration

Main Analysis & Encoding Rate control & Other

Analysis

Adaptive DCT

I-frames partitions

i8x8 i4x4

P/B-frames partitions

i8x8 i4x4

p8x8 p4x4 b8x8

Fast P-skip

Max frame refs

Mixed refs

ME algorithm

ME range

Subpixel ME refinement

Chroma ME

Psy RDO strength

Min GOP size

Max GOP size

Scenecut threshold

Max consecutive B-frames

Adaptive B-frames

B-frames bias

B-frames MV prediction

B-frames pyramid

Weighted B-frames prediction

Encoding

In-loop deblocking filter

Deblocking strength

Deblocking threshold

Interlaced

CABAC

DCT decimate

Noise reduction

Trellis

Intra deadzone

Inter deadzone

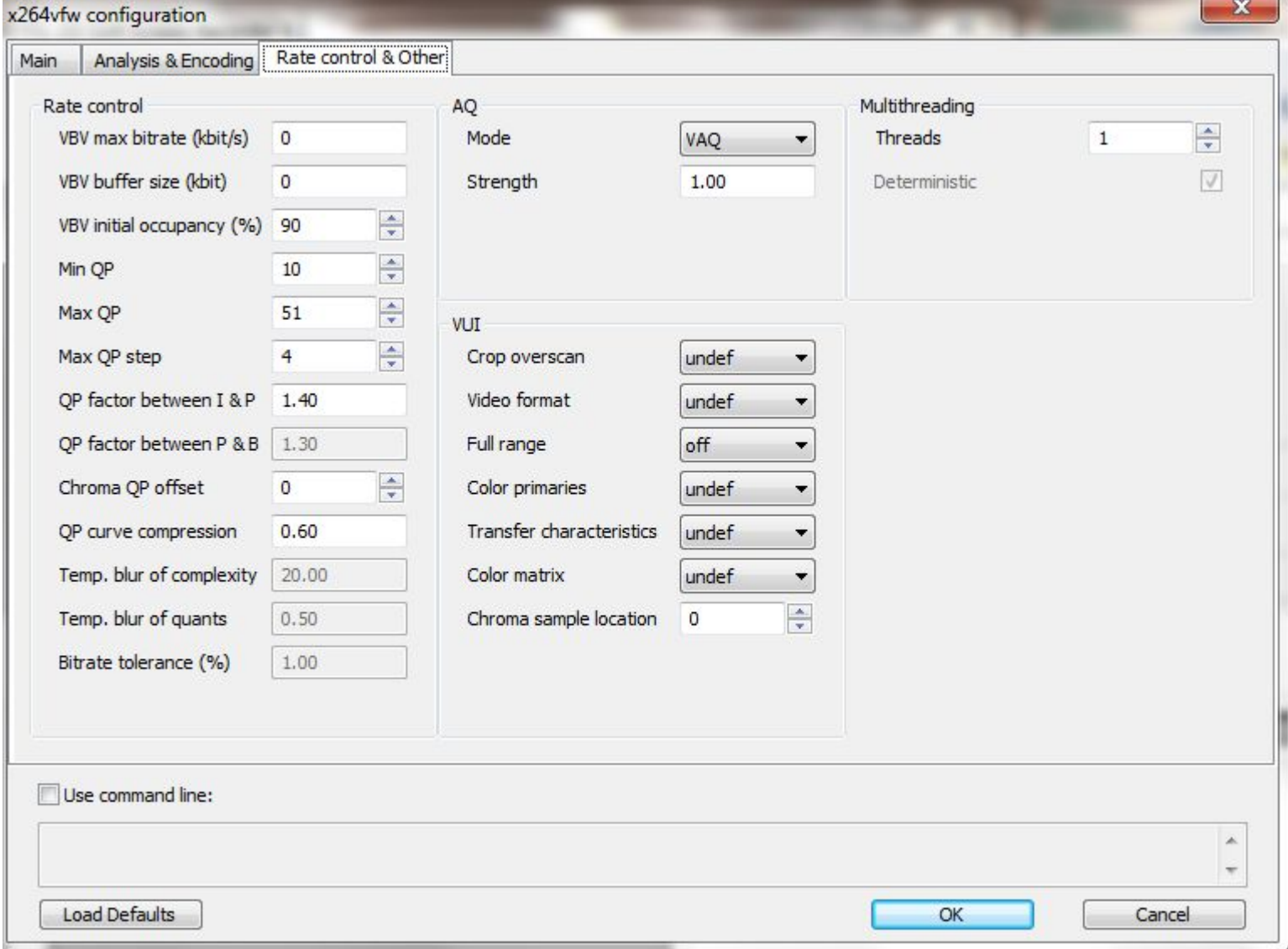
Quant matrices

Custom quant matrices file:

Psy trellis strength

Use command line:

Load Defaults OK Cancel



Output Audio Settings Config

